

Working Effectively Across Organizations

YANCEY ALLIANCE FOR YOUNG CHILDREN

Collective Impact in a Rural Community

Jennifer W. Simpson, Executive Director
Blue Ridge Partnership for Children



YAY Children!



a partner in the
Smart Start network™



the yancey
fund

an affiliate
of **cfwnc**

Challenges in Rural Communities

- NC Rural Economic Development Center defines a community with an average population density of 250 individuals per square mile or less as “rural”
- Children in rural communities face more obstacles along the pathway to grade-level reading at a higher rate than their non-rural peers
- Policymakers, service providers and funders must pay more attention to rural communities, and better understand the impact of their actions in these areas

*Early Childhood in Rural NC: Assessing Rural Communities on Pathways to Grade-Level Reading
NC Rural Health Leadership Alliance Early Childhood Work Group*



YAY Children!



Yancey County, NC

Nestled in the heart of the Blue Ridge Mountains in WNC

Home of Mount Mitchell, Highest Peak in Eastern America

The rugged natural beauty does not protect our families from challenges of geographic isolation, intergenerational poverty, limited economic development and socio-economic disparity.

Population: **17,678**

Poverty Level **19.1%** (NC 15.4%)

NC Dept. of Commerce designation: **Tier 1**

Median Household Income: **\$36,993** (NC \$48, 256)

Children birth-age 5: **946**

Children NOT enrolled in licensed early child care programs: **738 (78%)**

Prerequisites for a successful Collective Impact initiative



- Influential champion
The Yancey Fund
- Urgency for change
ACEs & First 2000 Days
- Financial resources
Community Foundation WNC



YAY Children!



Phase 1 Vision:

The young children (birth to 5) of Yancey County will be prepared for school and future life success through the strong support of their families, communities, and quality care and learning experiences that build skills in all domains of learning.

Resource Mapping Purpose:

To *identify current services*, programs and funding sources within the county for children birth-age 5, *identify gaps and duplications* in these services and programs, and *specify actions* to take in response to these findings to build the best possible foundation for children in Yancey County.



YAY Children!

Community Engagement & Awareness

1st Community Orientation and Work Session

First 2000 Days Presentation

Vision Statement & Purpose

Research Process for Resource Mapping

Review general community demographics

Community Organization Surveys

Kindergarten Focus Groups

Medical Provider Interviews

Family Listening Sessions



Development of draft Actions & Opportunities Plan

2nd Community Briefing & Action Planning Session

Reflection, Input and Prioritize Actions & Opportunities Plan

Invitation to Join in Planning Effort!!



YAY Children!

FINALLY - Ready to implement using Collective Impact model!

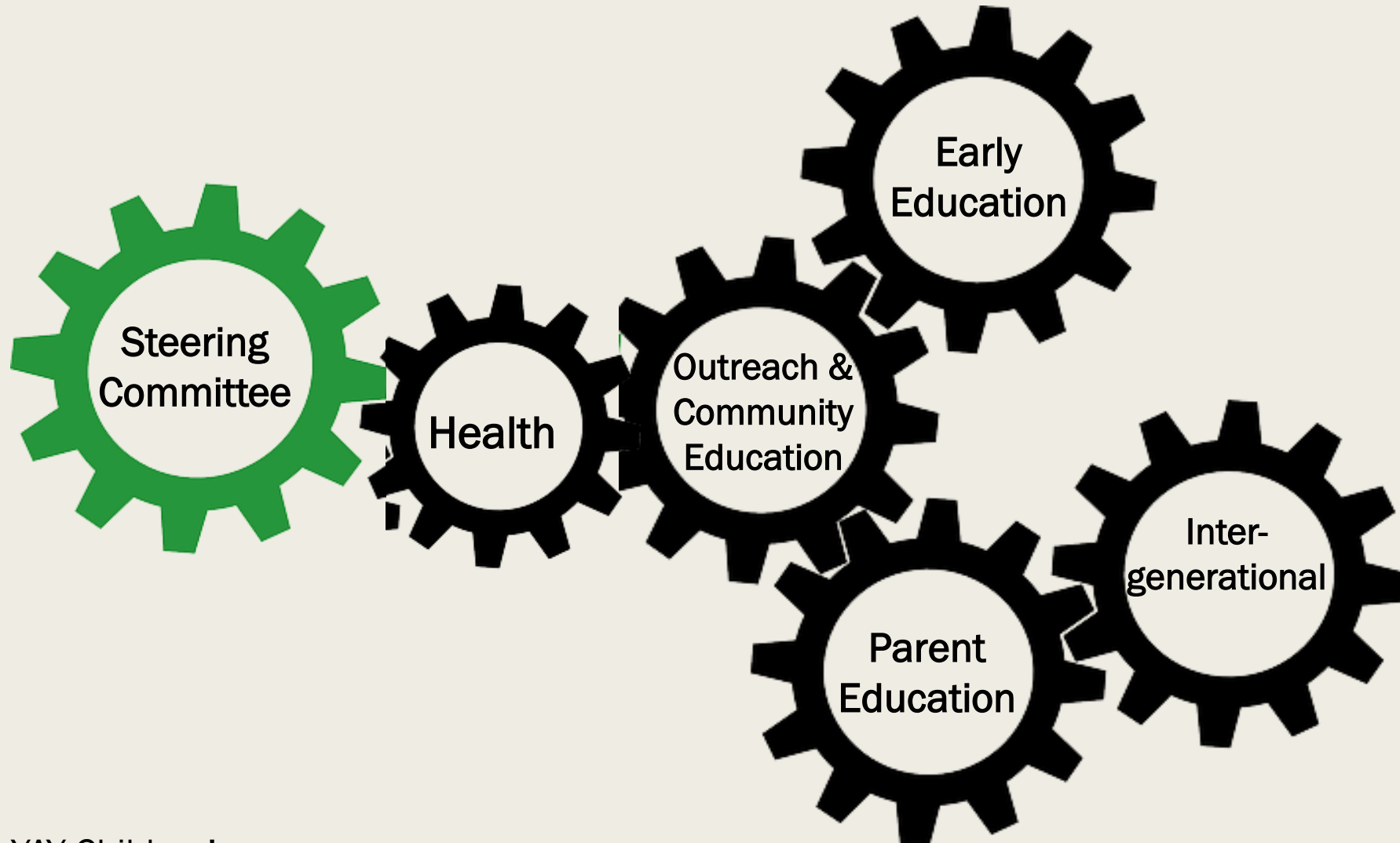
diverse organizations
coming together
to solve a complex social problem



YAY Children!



Elements of YAY Children! A&O Plan



YAY Children!

Operationalizing the Steering Committee & Work Groups

Establish members and leadership – with contingency plans

Orient, and be prepared to continue as members come and go!!

- *Initiative's history*
- *Organizational structure (Steering Committee ↔ Work Groups)*
- *Actions & Opportunities Plan*

Implementation Plan, with resource development as needed

Evaluation Plan

Continuous Communication & Updates



YAY Children!

EVALUATE, REFINE, REPEAT!

Celebrating success...

ACEs & CREM trainings for school staff, inviting early childhood caregivers

Ready Rosie parent video distribution with classroom component

Increased Child Care Subsidy utilization

Family Matters Parenting Education continuum funded

Alignment of activities under NC Pathways Measures of Success

Agency Roundtables regarding early learning opportunities

Creative Landscape Task Force planning

Ray Cort Park renovations planning underway

Farm to Child Care funding application submitted

Building on schools ↔ early childhood relationship to support
Birth-8 ESSA planning



YAY Children!

Jennifer W. Simpson, Executive Director
Blue Ridge Partnership for Children
director@brpartnershipforchildren.org



Blue Ridge Partnership for Children www.blueridgechildren.org

Smart Start www.smartstart.org

Community Foundation WNC www.cfwnc.org

NC Rural Economic Development Center www.ncruralcenter.org

NC Rural Health Leadership Alliance www.foundationhli.org

US Census Quick Facts www.census.gov/quickfacts

NC Early Childhood Foundation www.first2000days.org

Yancey Alliance for Young Children www.yaychildren.org



YAY Children!